



Jessie Younghusband

School Travel Policy

Purpose

The purpose of this Travel Policy is to:

- Promote sustainable and active modes of travel to and from Jessie Younghusband School
- Ensure the safety and wellbeing of all pupils, staff, and visitors when travelling to and from the school
- Reduce the school's environmental impact and carbon footprint
- Encourage healthy lifestyles and physical activity among the school community

Scope

This policy applies to all pupils, staff, parents/carers, and visitors to Jessie Younghusband School.

Roles and Responsibilities

School Leadership Team

- Develop, implement, and regularly review the school's Travel Policy
- Allocate appropriate resources to support the policy's objectives
- Promote the policy and its benefits to the school community
- Monitor and evaluate the effectiveness of the policy

Staff

- Act as positive role models by choosing sustainable travel options
- Encourage pupils to use active and sustainable travel modes
- Provide support and guidance to pupils and parents/carers on travel options

Pupils

- Choose active and sustainable travel modes where possible
- Follow the school's guidance and instructions on safe travel behaviour

Parents/Carers

- Support the school's Travel Policy by choosing sustainable travel options
- Encourage their children to use active and sustainable travel modes
- Provide feedback and suggestions to the school on the policy's effectiveness

What we do

- We use Modeshift STARS to update and monitor our school travel plan
- We promote safe and active travel as much as possible by using our noticeboard, displays, newsletter and website at <schoolwebsite>
- We encourage all members of our school community to walk, cycle or travel by public transport for the journey to school. To support this we provide:
 - Cycle training (Bikeability)
 - Scooter training
 - Pedestrian training
 - Cycle parking
 - Scooter parking
 - Lockers for helmets/equipment
 - Public transport information
- Local school trips are made by public transport where possible, or on foot if the destination is close by
- We let all new pupils and their parents/carers know that we promote healthy and sustainable travel to school before the child starts at our school

What we ask of parents

- Please encourage your child(ren) to walk, scoot or cycle to school whenever possible
- Ensure your child(ren) walk or ride sensibly and safely on the way to and from school, and to push bikes and scooters on school grounds
- Ensure that bicycles and scooters are roadworthy and properly maintained. If in doubt consult a qualified mechanic
- Consider providing your child(ren) with a cycle helmet
- Ensure your child(ren) can be seen by fitting lights to their bike by supplying them with high-visibility clothing
- Make sure your child(ren) has a lock for their bike or scooter and that they know how to use it
- Ensure you have appropriate insurance cover for your child(ren)'s bicycle or scooter as the school is not liable for any loss or damage to cycles or scooters on the premises or being used on the way to or from school
- If you travel by bus, can you get off the bus at least two stops early and walk the last part of the journey?

We understand that sometimes there is no alternative to driving to school.

- Where a car must be used we ask parents to drive only part of the way, and drop their child(ren) off away from the school so that some of the journey can be walked or scooted
 - We have a 5 / 10 minute walk zone we ask parents to part taking not of the map (see appendix 1)
- If you do have to drive your child(ren) and stop in the near vicinity please do so legally, safely and with respect for our neighbours and local residents
- It is not acceptable to park or wait on double yellow lines, on the school zigzags or across residential driveways for any period of time.

Please note that the decision on whether a child is competent to cycle or scoot to school is for the parent(s) or carer(s) to make. The school has no liability for any consequences arising from this decision.

What we ask of pupils

- Ask your parents if you can walk, scoot or cycle to school
- Behave in a way that shows you and the school in the best light whether walking, scooting, cycling or using public transport
- Ride or walk courteously, sensibly and safely on the way to and from school
- Push bikes and scooters on school grounds

- Check that your bike or scooter is roadworthy and properly maintained
- Consider wearing a cycle helmet
- Make sure you can be seen by using lights in the dark or bad weather and by wearing high-visibility clothing
- Make sure you have a lock for your bike or scooter and that you use it

Travel Options and Guidance

Walking

- Pupils and staff are encouraged to walk to school where possible.
- The school will work with the local authority to identify and promote safe walking routes to the school.
- Appropriate crossing points and traffic calming measures will be considered to enhance pedestrian safety.

Cycling and Scooting

- Secure and weatherproof cycle and scooter storage facilities are provided on-site.
- The school will promote cycling and scooting as healthy and sustainable travel options.
- Cycle training and road safety education will be offered to pupils.

Public Transport

- The school will work with local transport providers to ensure reliable and accessible public transport options are available.
- Information on public transport routes and timetables will be provided to the school community.

Car Sharing

- The school will encourage staff and parents/carers to consider car sharing where active or public transport is not feasible.
- A car sharing scheme may be established to facilitate connections between those living in the same areas.

Visitors and Contractors

- Visitors and contractors are expected to follow the school's Travel Policy when visiting the site.
- Appropriate parking and drop-off/pick-up arrangements will be communicated to visitors and contractors.

Implementation and Monitoring

Travel Plan

- The school will develop and regularly review a comprehensive Travel Plan, which will outline specific objectives, targets, and action plans to promote sustainable travel.
- The Travel Plan will be informed by surveys, consultations, and data analysis to understand the travel patterns and needs of the school community.

Engagement and Communication

- The school will actively engage with pupils, staff, parents/carers, and the local community to raise awareness and encourage participation in the Travel Policy.
- Regular communication channels, such as newsletters, assemblies, and parent/carer meetings, will be used to share information and gather feedback.

Monitoring and Evaluation

- The school will monitor the implementation and effectiveness of the Travel Policy, including:
 - Travel mode share among pupils and staff
 - Levels of active and sustainable travel
 - Feedback from the school community
 - Impact on the school's carbon footprint and environmental sustainability
- The policy will be reviewed bi-annually, and any necessary adjustments will be made to ensure its continued effectiveness.

Parking around Jessie Younghusband School

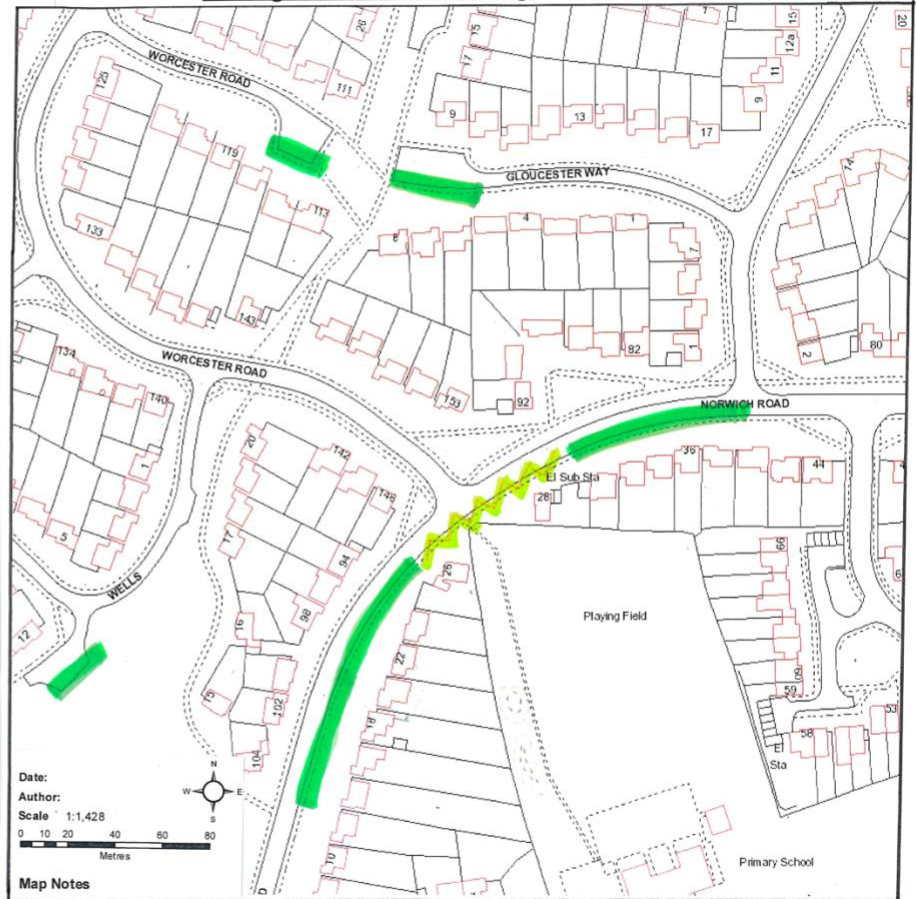


School
NO PARKING



Recommended Parking

Please always park respectfully to our neighbours and other users.
Thank you.



Date:
Author:
Scale 1:1,428
0 10 20 40 60 80
Metres

Map Notes

Crown Copyright. All rights reserved.
West Sussex County Council
100023447 (2012)